

Honour Based Violence Abuse & Forced Marriage Identification and Referral Pathway

Nottingham City has developed a pathway to enable a consistent response for adults affected by Honour Based Violence Abuse and or Forced Marriage. This has been developed to highlight options depending on the circumstances of the cases from the involvement of Domestic Violence Specialists, the Multi-Agency Risk Assessment Conferences (MARACs), the Police and Adult Social Care working together to provide a safe and supportive response to adults at risk from HBVA/FM.

Forced marriage

A forced marriage is a marriage in which one or both spouses do not consent to the marriage but are coerced into it. Duress can include physical, psychological, financial, sexual and emotional pressure. In cases of vulnerable adults who lack the capacity to consent to marriage, coercion is not required for a marriage to be forced.

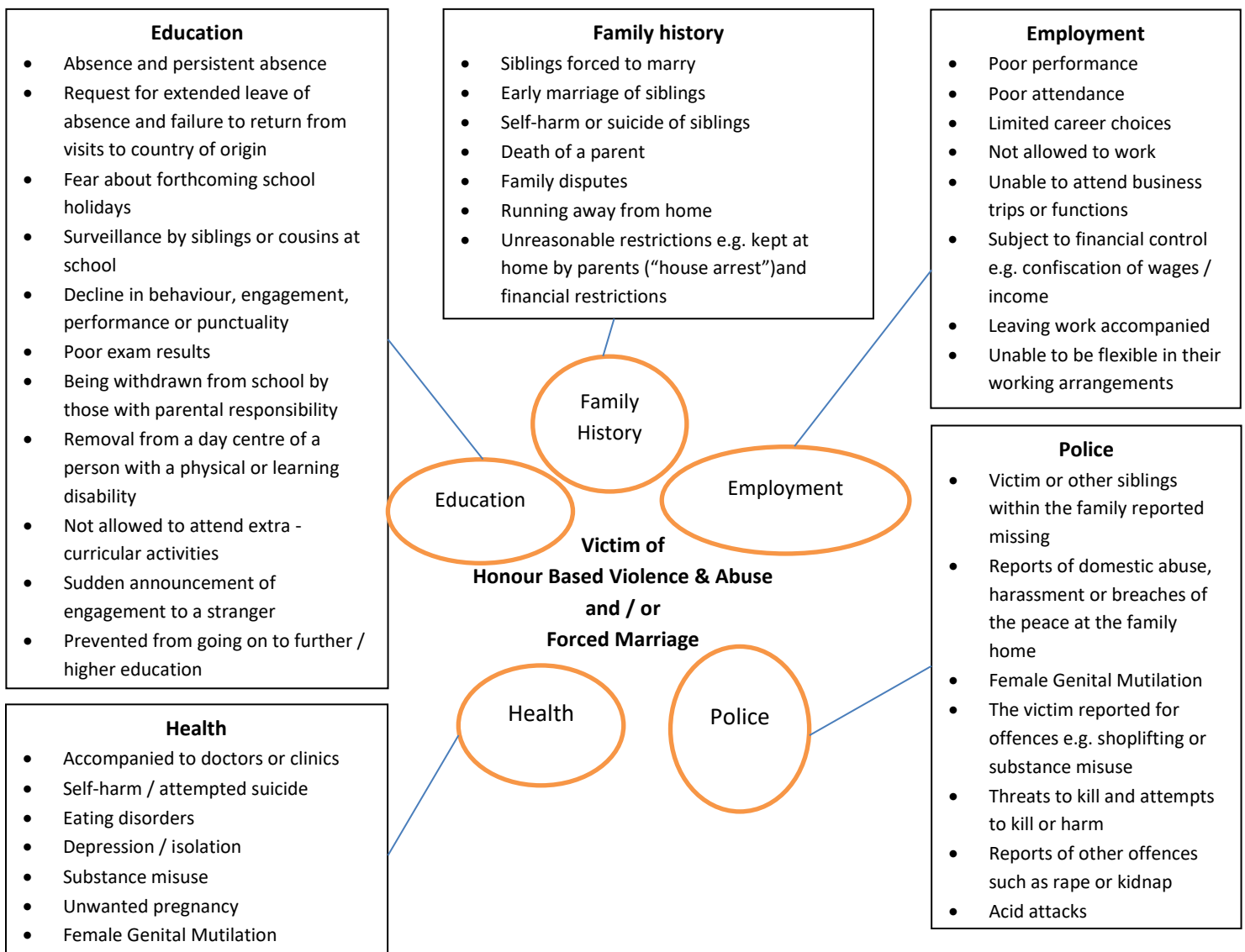
Honour-based violence

The terms “honour crime” or “honour-based violence” or “izzat” embrace a variety of crimes of violence (mainly but not exclusively against women), including assault, imprisonment and murder where the person is being punished by their family or their community. They are being punished for actually, or allegedly, undermining what the family or community believes to be the correct code of behaviour.

In transgressing this correct code of behaviour, the person shows that they have not been properly controlled to conform by their family and this is to the “shame” or “dishonour” of the family. It can be distinguished from other forms of abuse, as it is often committed with some degree of approval and/or collusion from family and/ community members. Victims will have multiple perpetrators not only in the UK; HBV can be a trigger for a forced marriage.

Chart of Potential Warning Signs or Indicators

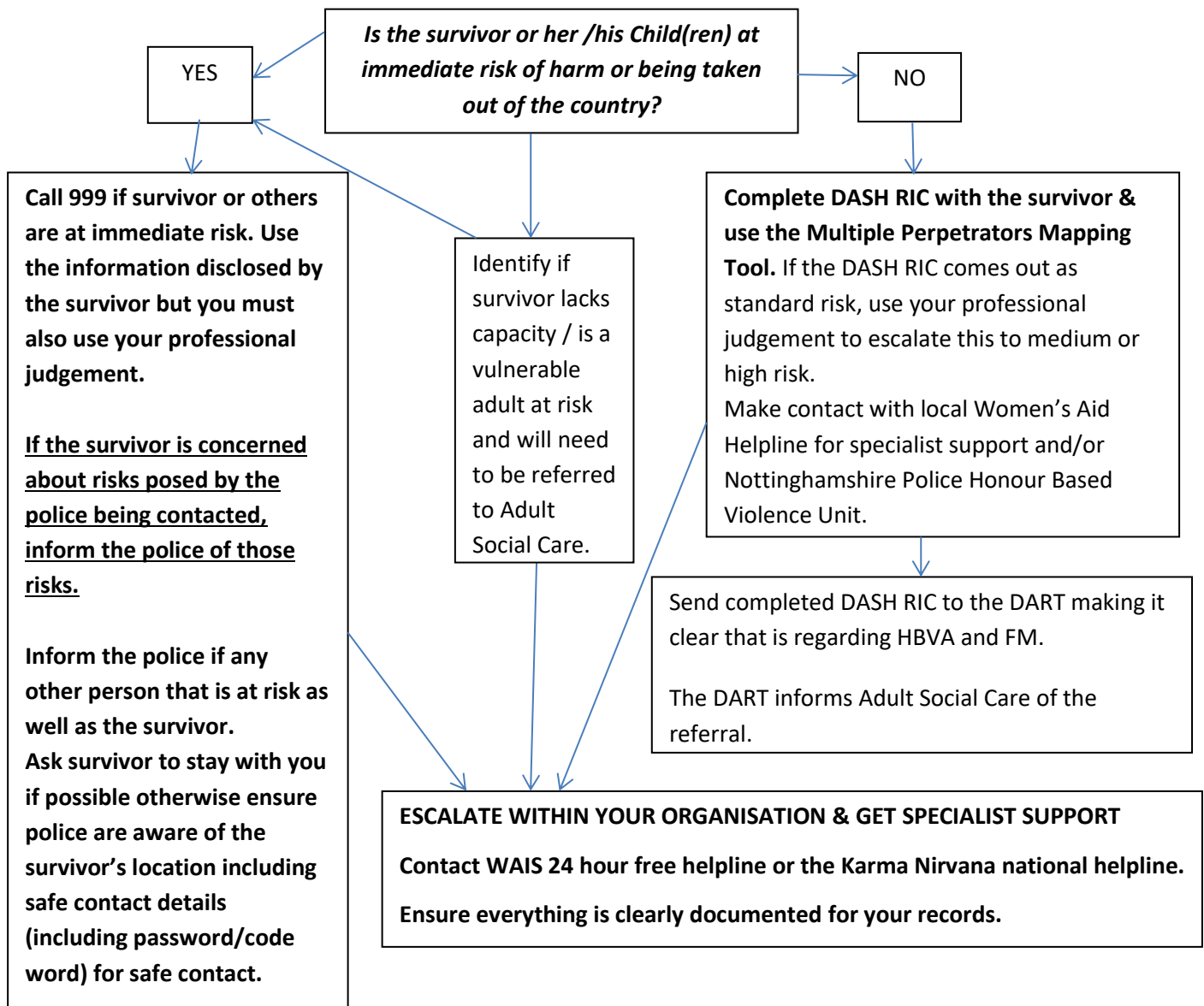
These indicators are not intended to be an exhaustive list



1. Adult Referral Process

Establish the survivor’s opinion and what they want from this contact. Clearly document the disclosure and identify who it is they feel they are at risk from. **REMEMBER** there will be multiple perpetrators involved (family, friends, wider community). Consider using the Multiple Perpetrator Mapping Tool which is attached to the DASH RIC form. Consider who else may be at risk e.g. siblings or family members.

Do NOT make contact with family to mediate or interpret – any alerts to family / those involved will significantly increase risk to the adult. If you require an interpreter, follow your own agency procedures.



CONTACT NUMBERS

WAIS 24 hour free Helpline - 0115 947 6490 (professionals) or for survivors - 0808 800 0340 / 0808 800 0341 (textphone 9:00-17:00)

Nottinghamshire Police HBVA - 101

Nottingham City Adult Social Care - 0300 131 0300 (8:30-17:00) or out of hours 0115 876 1000

Forced Marriage Protection Unit - 0207 088 0151 (out of Hours - 0207 008 1500)

Karma Nirvana - 0800 599247

References:

Forced Marriage survivors handbook -

https://www.gov.uk/government/uploads/system/uploads/attachment_data/file/149854/FM_Survivors6.pdf

Multi-agency practice guidelines: Handling cases of forced marriage -

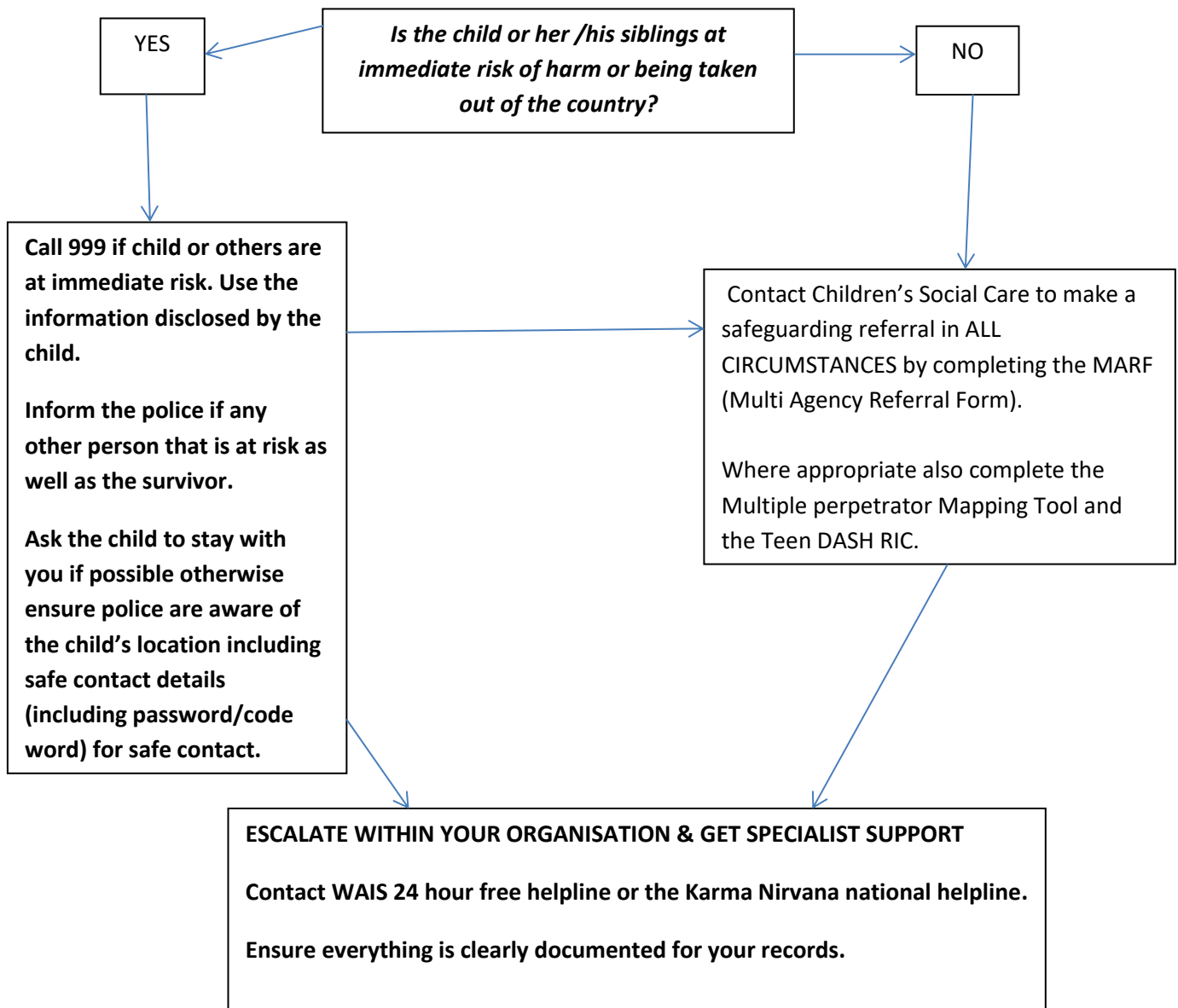
https://www.gov.uk/government/uploads/system/uploads/attachment_data/file/322307/HMG_MULTI_AGENCY_PRACTICE_GUIDELINES_v1_180614_FINAL.pdf

2. Child Referral Process

Establish the child’s concerns and what they want from this contact. Be clear with the child about what you can and cannot keep in confidence. Clearly document the disclosure and identify who it is they feel they are at risk from. **REMEMBER** there will be multiple perpetrators involved (family, friends, wider community). Consider using the Multiple Perpetrator Mapping Tool which is attached to the DASH RIC form. Consider who else may be at risk e.g. siblings or family members.

Do NOT make contact with family to mediate / discuss the disclosure or interpret – any alerts to family / those involved will significantly increase risk to the child.

If you require another professional present when speaking to the child / young person, or an interpreter follow your own agency procedures.



CONTACT NUMBERS

Nottingham City Children and Families Direct – 0115 876 4800 (8:30-17:00) or if out of hours for emergency safeguarding enquiries.

WAIS 24 hour free Helpline - 0115 947 6490 (professionals) or 0808 800 0340 (survivors) / 0808 800 0341 (text phone 9:00-17:00)

Nottinghamshire Police HBVA - 101

Childline – 0800 1111

Forced Marriage Protection Unit - 0207 088 0151 (out of Hours - 0207 008 1500)

Karma Nirvana - 0800 5999247

NSPCC – 0800 800 5000